

# Culinary Arts

We highly encourage you to enter your artwork online at [www.pimacountyfair.com](http://www.pimacountyfair.com). Get involved!

## PRICE OF ENTRIES

\$2.00 per Adult

\$1.00 per Teen (ages 13-17)

\$1.00 per Youth (ages 5-12)

## “Color Outside the Lines Contest”

Break the rules. Stir in the fun. Serve the unexpected.



**DIVISION 800 – COLOR OUTSIDE THE LINES CULINARY CONTEST – ADULT**  
**DIVISION 801 – COLOR OUTSIDE THE LINES CULINARY CONTEST- TEEN**  
**DIVISION 802 – COLOR OUTSIDE THE LINES CULINARY CONTEST – YOUTH**

### **CLASS 1000**

### **DESCRIPTION**

This isn't your typical recipe contest, this is your chance to **break the rules and cook with creativity!** Inspired by the theme “*Color Outside the Lines*,” participants are encouraged to create culinary entries that are bold, playful, colorful, or totally unexpected.

This contest challenges bakers, canners, decorators, and culinary creatives to **push past traditional boundaries** in flavor, form, and presentation. Whether it's a wild color, quirky shapes, bold flavor mashups, or imaginative plating—this is your chance to get fearless in the kitchen!

**This year's Culinary Home Arts theme, "Color Outside the Lines,"** is all about creativity that delights the eyes and the taste buds. Think beyond recipes and tradition—break the mold with bold flavors, vibrant presentations, and unexpected twists!

Whether you're baking, canning, decorating, or cooking, this theme invites you to explore culinary expression that's fun, fearless, and outside the usual lines.

### **Ideas to Inspire You:**

- Create baked goods with vibrant colors, unique shapes, or artistic flair.
- Decorate cakes, cookies, or cupcakes with playful themes or abstract designs.
- Infuse traditional dishes with surprising ingredients or global influences.
- Present jams, breads, or preserves in eye-catching packaging or whimsical shapes.
- Submit a visually striking display or food item that tells a story or evokes emotion.

This is your chance to **get bold in the kitchen** — where a culinary “mistake” could turn into a masterpiece.

Surprise the judges, have fun with your presentation, and remember **there are no rules when you're coloring outside the lines.**

### **Entry Requirements**

- Any culinary item is welcome: baked goods, candy, savory dishes, decorated items, preserves, snacks, etc.
- Must be homemade and presented in a disposable or non-returnable container
- **Label each entry** with:
  - Entry Title.
  - Short Description (1–2 sentences on how it reflects the theme).
  - List of main ingredients (for allergy awareness).
  - Bonus points for creative names, colorful presentation, or unconventional ingredients!
  - Must be edible.
  - No alcohol-based products (must be family-appropriate).
  - The Fair is not responsible for lost or spoiled entries.
  - Up to 1 entry per person.

## **Judging Criteria**

- **Creativity & Theme Use** – How well it embraces “Color Outside the Lines”.
- **Presentation & Visual Appeal** – Artistic design, color, shape, or plating.
- **Taste** (where applicable) – Flavor balance, originality, overall deliciousness.
- **Craftsmanship** – Care in creation, execution, and quality.
- **Bonus Points for Bold Use of Color or Unique Combinations!**

## **Contest Judging Rule for Single Entry Divisions**

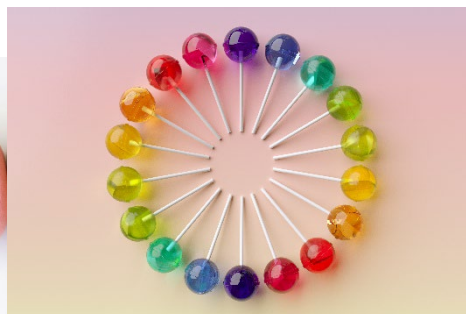
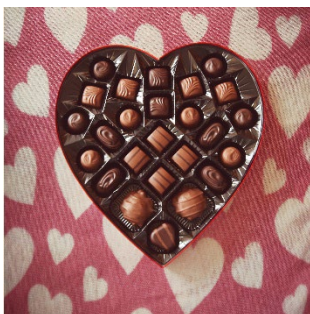
If a division within a contest has only one entry, that entry will not be automatically awarded first place. Instead, it will be judged alongside the closest appropriate age division (e.g., adult entries may be judged with teen entries, and Teen with Youth, etc.). This ensures all entries are evaluated fairly and competitively. The final decision on cross-division judging will be made at the discretion of the judging panel and contest coordinator.

**1st Place Winner: \$25**

**2nd Place Winner: \$15**

**3rd Place Winner: \$10**

# “Candy Making Contest”



**DIVISION 900 – CANDY MAKING CULINARY CONTEST – ADULT**

**DIVISION 901 – CANDY MAKING CULINARY CONTEST- TEEN**

**DIVISION 902 – CANDY MAKING CULINARY CONTEST – YOUTH**

## **CLASS 2000**

### **DESCRIPTION**

Show off your sweet skills in the Candy Making Contest! Whether you're a chocolate connoisseur or a fan of nostalgic hard candies, this contest is your chance to shine. Handmade confections of all kinds are welcome—creamy fudges, chewy caramels, brittle, toffee, truffles, lollipops, and more!

Calling all candy creators! The **Candy Making Contest** invites you to showcase your skills in crafting delicious and visually appealing homemade candies. From classic recipes to original creations, this contest celebrates flavor, craftsmanship, and presentation.

### **Entry Requirements**

- Must be homemade and presented in a disposable or non-returnable container.
- **Label each entry** with:
  - Entry Title.
- All entries must be homemade by the exhibitor.
- Candy must be attractively displayed on a disposable plate or in a clear container with a secure cover.
- Label the type of candy and list key ingredients (for allergy awareness).
- Minimum of **6 pieces** per entry.
- Entries will be judged on appearance, texture, flavor, and creativity.
- Youth, teen, and adult divisions. If a division has only one entry, it may be judged with the nearest age division.
- Up to 1 entry per person.

### **Acceptable Entries Include**

- Fudge
- Caramels
- Brittle
- Toffee
- Lollipops
- Truffles
- Marshmallows
- Any original or traditional homemade candy

### **Judging Criteria for Candy Making**

- **Creativity** – Originality in flavor, shape, or concept.
- **Presentation & Visual Appeal** – Design, color, shape, or plating.
- **Taste** – Flavor balance, texture, and overall deliciousness.
- **Craftsmanship** – Care in creation, consistency, and quality.
- **Bonus Points** for unique ingredient combinations or standout visual details.

**1st Place Winner: \$25**

**2nd Place Winner: \$15**

**3rd Place Winner: \$10**

# Awards and Ribbons

1<sup>st</sup> Blue Ribbon

2<sup>nd</sup> Red Ribbon

3<sup>rd</sup> White Ribbon

Best of Show \$25.00

Best of Class \$15.00

People's Choice \$30.00

**Cash Awards:** Cash awards will be given as cash vouchers. Artists must collect these vouchers from the information desk and cash them at the Fair Office Cashier Window as soon as they are issued.

Cash vouchers must be redeemed no later than Monday, April 27, 2026.

## **Award Criteria:**

Ribbons will only be awarded if the entry meets a standard of quality as determined by the judge. An entry must be deemed worthy to receive an award.

## **Judging System:**

We use the Danish Judging System, where each entry is evaluated individually based on merit rather than in direct competition with others. All judging decisions are final.

## **Types of Judging:**

**Merit-Based Judging:** Each piece is judged on its own merits according to set standards.

**Competitive Judging:** Only entries selected for Best of Class, Best of Show, Contests and People's Choice will be compared against other entries.

## **Best of Class Guidelines:**

15 or More Entries: Eligible for Best of Class award with a monetary prize.

3 to 14 Entries: May be awarded Best of Class title, without a monetary prize.

Fewer than 3 Entries: Not eligible for Best of Class recognition.

This approach ensures that high-quality work is acknowledged in all categories while reserving prize funds for larger, more competitive divisions.

# GENERAL RULES

- No business cards are allowed on any entries.
- Entries must be from an individual cook.
- Exhibitors are responsible for determining which class and division they wish to compete in. Improperly classified entries could be disqualified with no entry fee refund given.
- Judging is closed to the public and all judging decisions are final.
- All food entries will be disposed of after the Fair, so please use disposable dishes.
- Wrap or bag all food entries to keep them fresh for the judges. All food must be made from scratch.
- Submit four (4) candies, cupcakes, muffins, cookies, fudges, biscuits, or rolls per plate or Ziploc bag.
- The jars must be standard KERR or MASON canning jars only and sealed.
- All canned jars must be sealed upon arrival. If not sealed due to health hazards, canned jars will only be judged on appearance and texture. Only 16 oz., pint, 32 oz., or quart jars are allowed.
- The Fair reserves the right to remove and dispose of any food showing signs of spoilage. A picture may be taken in place of the food entry if it spoils during the Fair. Only 10 entries are allowed for all classes.
- If your entry is late, it may not be judged.

## DROP OFF FOOD ENTRIES

**Date & Time:** Saturday, April 11, 2026, 10:00am – noon.

**Location:** Old Pueblo Conference and Event Center, Pima County Fairgrounds, 11300 S. Houghton Rd., Tucson, AZ 85747

**Note:** Judging starts at NOON on the same day.

**All food entries are judged on the same day they are delivered.**

# CULINARY HOME ARTS OPEN DIVISION

**DIVISION 5000 – MISCELLANEOUS – ADULT**

**DIVISION 5001 – MISCELLANEOUS – TEEN**

**DIVISION 5002 – MISCELLANEOUS – YOUTH**

<b>CLASS</b>	<b>DESCRIPTION</b>
500	Appetizers
501	Cactus
502	Candy
503	Casserole
504	Corn or Flour Tortillas
505	Doughnuts
506	Dried Fruits, Chips, Popcorn
507	Fresh Salsa
508	Fudge
509	Jerky/Dried Meat
510	Main Dish – Entrée
511	Mexican Food
512	Petit Fours
513	Salad
514	Vegetable Dish
515	Wild Venison
516	Other – Miscellaneous

**DIVISION 5003 – QUICK BREADS AND DOUGHS – ADULT**

**DIVISION 5004 – QUICK BREADS AND DOUGHS – TEEN**

**DIVISION 5005 – QUICK BREADS AND DOUGHS – YOUTH**

<b>CLASS</b>	<b>DESCRIPTION</b>
500	Baking Powder Bread
501	Biscuits
502	Coffee Cake
503	Corn Bread
504	Fruit Bread
505	Muffins
506	Vegetable Bread
507	Other - Quick Breads and Doughs



**DIVISION 5006 – YEAST BREADS – ADULT**

**DIVISION 5007 – YEAST BREADS – TEEN**

**DIVISION 5008 – YEAST BREADS – YOUTH**

<b>CLASS</b>	<b>DESCRIPTION</b>
500	100% Whole Grain Bread or 4 Rolls
501	Bread Machine Breads
502	Mixed Grain Bread or 4 Rolls
503	Sweet Bread or 4 Rolls
504	White Bread or 4 Rolls
505	Other - Yeast Breads

**DIVISION 5009 – CAKES – ADULT**

**DIVISION 5010 – CAKES – TEEN**

**DIVISION 5011 – CAKES – YOUTH**

<b>CLASS</b>	<b>DESCRIPTION</b>
500	Birthday Cake
501	Bundt Cake
502	Carrot Cake
503	Cup Cakes
504	Favorite Movie or Comic Book Cake
505	Holiday Cake
506	Pound Cake
507	Wedding Cake
508	Other – Cakes

**DIVISION 5012 – COOKIES – ADULT**

**DIVISION 5013 – COOKIES – TEEN**

**DIVISION 5014 – COOKIES – YOUTH**

<b>CLASS</b>	<b>DESCRIPTION</b>	<b>CLASS</b>	<b>DESCRIPTION</b>
500	Bar Cookies	505	Ethnic Cookies
501	Brownies	506	Filled Cookies
502	Cut Cookies	507	No Bake Cookies
503	Decorative	508	Refrigerator
504	Drop Cookies	509	Other – Cookies

**DIVISION 5015 – PIES – ADULT**

**DIVISION 5016 – PIES – TEEN**

**DIVISION 5017 – PIES – YOUTH**

<b>CLASS</b>	<b>DESCRIPTION</b>
500	Canned Fruit Pie
501	Cream Pie
502	Fresh Fruit Pie
503	Nut Pie
504	Pastries
505	Cheese Cake
506	Other – Pies

**DIVISION 5018 – HEALTHY FOODS – ADULTS**

**DIVISION 5019 – HEALTHY FOODS – TEEN**

**DIVISION 5020 – HEALTHY FOODS – YOUTH**

<b>CLASS</b>	<b>DESCRIPTION</b>
500	Low Calorie
501	Low Carbohydrate
502	Low Salt
503	Low Sugar or No Refined Sugar
504	No Salt
505	Other - Healthy Foods

**DIVISION 5021 – DECORATING WITH SUGAR – ADULT**

**DIVISION 5022 – DECORATING WITH SUGAR – TEEN**

**DIVISION 5023 – DECORATING WITH SUGAR – YOUTH**

<b>CLASS</b>	<b>DESCRIPTION</b>
500	Cake
501	Character Cakes, Pan Molds
502	Cup or Mini Cakes
503	Gingerbread House, etc.
504	Gum Paste Decorated
505	Original, Free-form Dimensional Cakes
506	Sugar Egg, Bell, Heart, etc.
507	Other - Decorating with Sugar

**DIVISION 5024 – CANNED FOODS – ADULT**

**DIVISION 5025 – CANNED FOODS – TEEN**

**DIVISION 5026 – CANNED FOODS – YOUTH**

<b>CLASS</b>	<b>DESCRIPTION</b>
500	Canned Fruit
501	Canned Meat, Poultry or Fish
502	Canned Vegetables
503	Fruit Butters
504	Honey
505	Jam
506	Jelly
507	Marmalade
508	Olives
509	Pickles
510	Relishes
511	Other – Canned Foods

**DIVISION 5027 – HOMEGROWN FROM THE GARDEN – ADULT**

**DIVISION 5028 – HOMEGROWN FROM THE GARDEN – TEEN**

**DIVISION 5029 – HOMEGROWN FROM THE GARDEN – YOUTH**

<b>CLASS</b>	<b>DESCRIPTION</b>
500	Bananas
501	Cherries
502	Grapes
503	Limes
504	Lemons
505	Oranges
506	Peaches
507	Plums
508	Strawberries
509	Cactus
510	Corn
511	Lettuce
512	Squash
513	Tomato
514	Zucchini
515	Eggplant
516	Potato

517	Mint
518	Oregano
519	Thyme
520	Other - Homegrown Herbs
521	Other - Homegrown Vegetables

## CULINARY HOME ARTS ENTRY FORM

ENTRANTS LAST NAME \_\_\_\_\_

FIRST NAME \_\_\_\_\_

PHONE \_\_\_\_\_

ADDRESS \_\_\_\_\_

CITY \_\_\_\_\_, AZ ZIP \_\_\_\_\_

EMAIL ADDRESS \_\_\_\_\_

ALL ENTRY FEES ARE NON-REFUNDABLE

Please circle one.

\$2.00 Adult (18+)

\$1.00 Teen (13-17)

\$1.00 Youth (5-12)

#	Division No.	Class No.	Title of Entry	Special Needs Y/N	Entry Fee
1					
2					
3					
4					
5					
6					
7					
8					
9					
10					

1 Ticket \$25.00 \_\_\_\_\_

2 Ticket \$50.00 \_\_\_\_\_

**Total** \_\_\_\_\_

**I understand and accept all risks of loss or damage to my exhibits from the point of delivery until their release after the Fair. I agree to abide by all stated rules and regulations.**

**Signature** \_\_\_\_\_

**Date** \_\_\_\_\_