

FINE ARTS

We highly encourage you to enter your artwork online at
www.pimacountyfair.com. Get involved!

PRICE OF ENTRIES

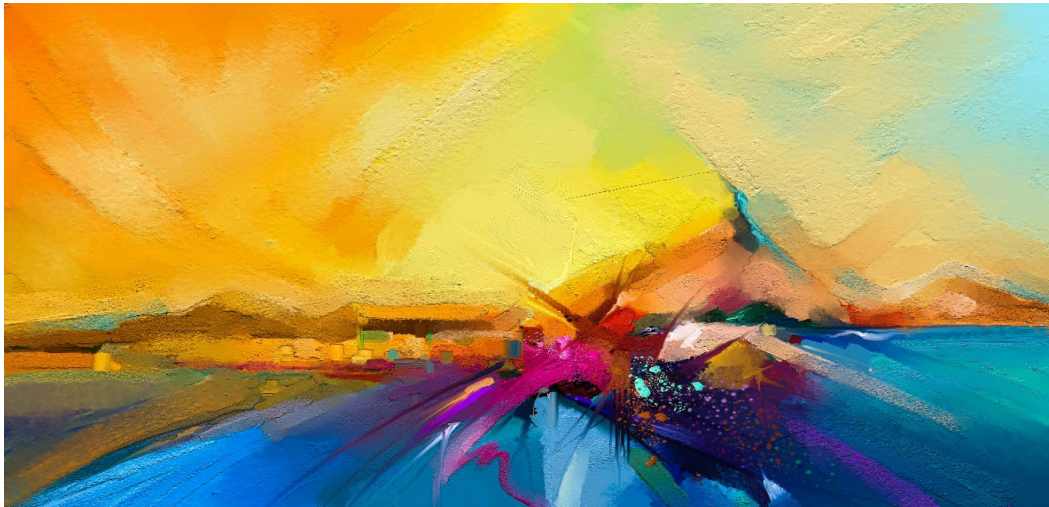
\$4.00 per entry Professionals

\$4.00 per entry Amateurs (18 Yrs +)

\$4.00 per entry Youth (8-17 Yrs old)

\$2.50 per entry Senior Amateurs and Senior Professionals (65 & up)

Theme: “Majestic Colors of Arizona”



Let the vibrant beauty of Arizona be your inspiration! From fiery desert sunsets and red rock canyons to blooming wildflowers and painted skies, this theme celebrates the stunning palette found throughout the state.

Ideas to Inspire You:

- Capture the changing colors of a desert sunrise or sunset.
- Recreate the earthy reds, golds, and purples of Arizona’s landscapes.
- Highlight iconic state imagery like saguaro cacti, hummingbirds, or sandstone cliffs.
- Use textiles, paint, photography, or mixed media to reflect Arizona’s diverse scenery.

Contest: “Postcard Party”

Create a postcard... LIVE at the Fair!

Free to Participate

How It Works

1. Stop by Old Pueblo Hall and sign up any day during the Fair.
2. Families, students, and first-timers can participate—no experience.
3. Choose a 4"×6" or 5"×7" blank postcard or small canvas panel (supplied by Pima County Fair).
4. Up to 1 entry per person.
5. Use available art supplies (colored pencils, markers, pastels, watercolors, supplied by Pima County Fair).
6. Complete your artwork within a set time (30–60 mins).
7. Add your name, phone number, title, and a short caption on the back of your postcard.
8. Hang your piece on the “Postcard Party Wall” wall for judging and public viewing.
9. Take a photo of your work to share online with hashtags like:
 - #PostcardsFromArizona
 - #PCFairPostcardParty

Participant Idea's

- “Draw your view if you were on an Arizona road trip.”
- “Color a desert animal in its natural habitat.”
- “What would your ‘Greetings from Tucson’ card look like from the 1930-1950.”
- “Imagine an Arizona sunset through your eyes.”

Judging Criteria: All entries—regardless of age—will be judged together in a single contest. **The winner will be announced Saturday April 25, 2026.**

Entries will be evaluated based on: Creativity & Energy, Use of Color, Composition and Overall Impression by the public.

People's Choice Winner: \$30

Eco Art Contest “Upcycled Arizona”

DIVISION 999 – YOUTH

DIVISION 3000 – AMATEUR

DIVISION 3001 – AMATEUR – SENIOR

DIVISION 3002 – PROFESSIONAL

DIVISION 3003 – PROFESSIONAL – SENIOR

CLASS	DESCRIPTION
500	Celebrate sustainability through creativity! This contest invites artists to reimagine discarded or recycled materials into beautiful, meaningful works of art inspired by Arizona’s natural beauty, wildlife, culture, or communities.

Ideas to Inspire you:

- Create a saguaro or sunset scene using soda can tabs, cardboard, or bottle caps.
- Use corrugated cardboard and natural materials (twigs, sand, dried flowers) to depict Monument Valley or Sabino Canyon.
- Craft a roadrunner, javelina, hummingbird, or lizard using scrap metal, wire, or plastic spoons.
- Use fabric scraps or old jeans to recreate a quilted desert animal.
- Design the state flag from repurposed T-shirts or colored paper scraps.
- Turn discarded license plates into a “Greetings from Arizona” sign.
- Make a birdhouse, planter, or jewelry holder from upcycled wood, cans, or containers.
- Turn old tires into painted flower sculptures or seating art.

Guidelines:

- **Eligibility:** Open to all ages and skill levels.
- **Materials:** At least 75% of the piece must be made from reused, recycled, or upcycled items.
- **Size Limit:** No larger than 36"x36" and no heavier than 50 lbs.
- **Display Requirements:** Must be stable and safe for public display. Hanging pieces must include sturdy wire or mounting hardware.
- **Entry Limit:** Up to 3 Eco Art entries per person.

Judging Criteria: Amateur, Amateur Senior, Professional and Professional Senior will be judged together in a single contest.

- Entries will be evaluated based on: Creativity & Originality
- Use of Recycled Materials
- Craftsmanship
- Connection to Arizona
- Environmental Message or Impact

1st Place Winner: \$25, 2nd Place Winner: \$15, 3rd Place Winner: \$10

Fine Arts Open Division

DIVISION DEFINITIONS

PROFESSIONAL

Designed for the Artist working on a professional level, who is teaching or has taught art, has participated in gallery exhibits or juried shows whose work is selling through stores, galleries, or Arts & Crafts fairs.

AMATEUR

Student or Hobbyist who has never sold their Artwork, except through the Fine Arts Department at the Pima County Fair.

YOUTH

Designed for young artists who are 17 years of age or younger and currently enrolled in elementary, middle, or high school. This category encourages creative expression and skill development among emerging artists. Entries must be the original work of the student.

SENIOR

Designed for the Artist who meets the definition of senior citizen age requirement, 65 or older.

DIVISION 1000 – YOUTH
DIVISION 2000 – AMATEUR
DIVISION 2001 – AMATEUR – SENIOR
DIVISION 2002 – PROFESSIONAL
DIVISION 2003 – PROFESSIONAL – SENIOR

CLASS	COLLAGE
200	Abstract - Collage
201	Landscape - Collage
202	Plants / Flowers - Collage
203	Mixed Media - Collage
204	Still Life - Collage
205	Other - Collage

DIVISION 1001 – YOUTH
DIVISION 2004 – AMATEUR
DIVISION 2005 – AMATEUR – SENIOR
DIVISION 2006 – PROFESSIONAL
DIVISION 2007 – PROFESSIONAL – SENIOR

CLASS	DRAWING
207	2D - Drawing
208	3D - Drawing
209	Charcoal - Drawing
210	Colored Pencil - Drawing
211	Conte Crayon - Drawing
212	Mixed Media - Drawing
213	Oil Pastel - Drawing
214	Pen & Ink - Drawing
215	Pencil - Drawing
216	Scratch Board - Drawing
217	Soft Pastel - Drawing
218	Other - Drawing

DIVISION 1002 – YOUTH
DIVISION 2008 – AMATEUR
DIVISION 2009 – AMATEUR – SENIOR
DIVISION 2010 – PROFESSIONAL
DIVISION 2011 – PROFESSIONAL – SENIOR

CLASS	GLASS
220	Blown - Glass
221	Etched - Glass
222	2 Dimensional - Stained Glass

223	3 Dimensional - Stained Glass
224	Other - Glass

DIVISION 1003 – YOUTH

DIVISION 2012 – AMATEUR

DIVISION 2013 – AMATEUR – SENIOR

DIVISION 2014 – PROFESSIONAL

DIVISION 2015 – PROFESSIONAL – SENIOR

CLASS	GOURD ART
226	Animals & Reptiles - Gourd Art
227	Beaded Gourds - Gourd Art
228	Birdhouses / Birdfeeders - Gourd Art
229	Carved Gourds - Gourd Art
230	Dolls made from Gourds - Gourd Art
231	Flowers - Gourd Art
232	Holiday - Gourd Art
233	Jewelry, a large portion made from Gourd - Gourd Art
234	Masks - Gourd Art
235	Miniatures - Gourd Art
236	Musical - Gourd Art
237	Painting - Gourd Art
238	Southwestern Design - Gourd Art
239	Wood Burning must be Dominate - Gourd Art
240	Woven - Gourd Art
241	Other - Gourd Art

All work must be done by the exhibitor. Craft must be predominantly gourd (more than 80% gourd). Hard shell gourds must have stems, be mature and clean. Ornamental gourds need not have stems.

DIVISION 1004 – YOUTH

DIVISION 2016 – AMATEUR

DIVISION 2017 – AMATEUR – SENIOR

DIVISION 2018 – PROFESSIONAL

DIVISION 2019 – PROFESSIONAL – SENIOR

CLASS	OIL AND ACRYLIC PAINTING
243	Acrylic - Oil and Acrylic Painting
244	Mixed Media - Oil and Acrylic Painting
245	Oil - Oil and Acrylic Painting
246	Other - Oil and Acrylic Painting

DIVISION 1005 – YOUTH
DIVISION 2020 – AMATEUR
DIVISION 2021 – AMATEUR – SENIOR
DIVISION 2022 – PROFESSIONAL
DIVISION 2023 – PROFESSIONAL – SENIOR

CLASS	PORCELAIN AND CHINA
248	Oriental, Dresden, Modernistic - Porcelain and China
249	Dolls - Porcelain and China
250	Embellished - Gold, Enamel, Luster-Porcelain and China
251	Landscape or Wildlife - Porcelain and China
252	Naturalistic - Floral or Fruit-Porcelain and China
253	Naturalistic – Portraits-Porcelain and China
254	Other - Porcelain and China

DIVISION 1006 – YOUTH
DIVISION 2024 – AMATEUR
DIVISION 2025 – AMATEUR – SENIOR
DIVISION 2026 – PROFESSIONAL
DIVISION 2027 – PROFESSIONAL – SENIOR

CLASS	WATER MEDIA
256	Acrylic on Paper - Water Media
257	Mixed Media - Water Media
258	Watercolor - Water Media
259	Other - Water Media

DIVISION 1007 – YOUTH
DIVISION 2028 – AMATEUR
DIVISION 2029 – AMATEUR – SENIOR
DIVISION 2030 – PROFESSIONAL
DIVISION 2031 – PROFESSIONAL – SENIOR

CLASS	WOODWORKING
261	Caricature - Woodworking
262	Kachina's Traditional or Contemporary - Woodworking
263	Miniatures - Woodworking
264	Relief - Woodworking
265	Sculpture - Woodworking
266	Wildlife - Woodworking
267	Wood Burning - Woodworking
268	Other - Woodworking

DIVISION 1008 – YOUTH
DIVISION 2032 – AMATEUR
DIVISION 2033 – AMATEUR – SENIOR
DIVISION 2034 – PROFESSIONAL
DIVISION 2035 – PROFESSIONAL – SENIOR

CLASS	MISCELLANEOUS
270	Clay Art with No Molds Used - Miscellaneous
271	Decorative Painting - Miscellaneous
272	Folk Art - Painting on Various Media - Miscellaneous
273	Jewelry - Miscellaneous
274	Bead Art - Miscellaneous
275	Sculpture - Miscellaneous
276	Other - Miscellaneous

DIVISION 1009 – YOUTH
DIVISION 2036 – AMATEUR
DIVISION 2037 – AMATEUR – SENIOR
DIVISION 2038 – PROFESSIONAL
DIVISION 2039 – PROFESSIONAL – SENIOR

CLASS	PHOTOGRAPHY
278	Black & White – Animal- Photography
279	Black & White - Flowers / Plants- Photography
280	Black & White – Landscape- Photography
281	Black & White – People- Photography
282	Black & White – Pets- Photography
283	Black & White – Sports- Photography
284	Color – Animal - Photography
285	Color - Flowers / Plants - Photography
286	Color – Landscape - Photography
287	Color – People - Photography
288	Color – Pets - Photography
289	Color – Sports - Photography
290	Historical - Photography
291	Infrared - Photography
292	Masking Tape Collage - Photography
293	Mixed Media – Animal - Photography
294	Mixed Media - Flowers / Plants - Photography
295	Mixed Media – Landscape - Photography
296	Mixed Media – People - Photography
297	Mixed Media – Pets - Photography

298	Mixed Media – Sports - Photography
299	Raw Images- Photography
300	Sepia- Photography
301	Stain, Smudge and Erode Using Water - Photography
302	Stitched Vintage - Photography
303	Underwater - Photography
304	Comedy - Photography
305	Other - Photography

DIVISION 1010 – YOUTH

DIVISION 2040 – AMATEUR

DIVISION 2041 – AMATEUR – SENIOR

DIVISION 2042 – PROFESSIONAL

DIVISION 2043 – PROFESSIONAL – SENIOR

CLASS	Quilts
306	Art Quilts - Original Design
307	Abstract or modern Quilts
308	Mixed Media Quilts
309	Nature - Inspired Quilts
310	People, Portraits & Storytelling
311	Miniature Art Quilts
312	Recycled or Upcycled Art Quilts
313	Other - Quilts

Awards and Ribbons

1st Blue Ribbon

2nd Red Ribbon

3rd White Ribbon

Best of Show \$40.00

Best of Class \$15.00

People's Choice \$30.00

Cash Awards: Cash awards will be given as cash vouchers. Artists must collect these vouchers from the information desk and cash them at the Fair Office Cashier Window as soon as they are issued.

Cash vouchers must be redeemed no later than Monday, April 27, 2026.

Award Criteria:

Ribbons will only be awarded if the entry meets a standard of quality as determined by the judge. An entry must be deemed worthy to receive an award.

Judging System:

We use the Danish Judging System, where each entry is evaluated individually based on merit rather than in direct competition with others. All judging decisions are final.

Types of Judging:

Merit-Based Judging: Each piece is judged on its own merits according to set standards.

Competitive Judging: Only entries selected for Best of Class, Best of Show, Contests and People's Choice will be compared against other entries.

Best Class Guidelines:

15 or More Entries: Eligible for Best of Class award with a monetary prize.

3 to 14 Entries: May be awarded Best of Class title, without a monetary prize.

Fewer than 3 Entries: Not eligible for Best of Class recognition.

Yes, you can sell your artwork

Sales of Artwork

The Pima County Fair is excited to offer the opportunity for artwork to be sold during the event. Here are the guidelines:

Pricing: Prices must be fixed amounts with no range or flexibility. No negotiations between the buyer and the artist are allowed.

Purchase Process: Artwork is sold on a first-come, first-served basis. Buyers must complete a purchase form and pay the Fair Manager.

Commission: The Fair will take a 20% commission on sales. The remaining balance will be given to the artist on the last day of the Fair.

Please note: All artwork that is sold may be picked up on the day of purchase. As a result, the piece you are displaying may not remain on display for the full 11 days of the Fair.

Distribution: The Fair Manager is solely responsible for the distribution of artwork.

Cash Awards: Cash awards will be given as cash vouchers. Artists must collect these vouchers from the Home Arts information desk and cash them at the Fair Office Cashier Window as soon as they are issued. Cash vouchers must be redeemed no later than Monday, April 27, 2026.

American System for judging, and their decisions are final. Judges will look for originality, quality of work, composition, and presentation.

General Rules

- **No Business Cards:** Business cards are not allowed on any entries.
- **Framing Requirements:** Artwork must be framed and ready to hang with heavy gauge picture wire. No glue or tape can be used.
- **Canvas Paintings:** Unframed canvas paintings must have a wire screwed into the frame.
- **Appropriateness:** Due to the family atmosphere of the Fair, artwork deemed inappropriate or containing nudity will not be accepted.
- **Liability:** The Pima County Fair and its agents assume no responsibility for loss, theft, or damage to any artwork during drop-off, display, pick-up, or storage. Every precaution will be taken to guard against such loss or damage.
- **Original Entries:** Entries must be from an individual artist. Previously submitted artwork is prohibited.
- **Size and Weight Limits:** Entries cannot exceed 36 inches in any dimension or weigh more than 50 pounds.
- **Classification:** Exhibitors are responsible for determining the correct class and division for their entries. Improperly classified entries may be disqualified with no entry fee refund.
- **Glass Cases:** Due to limited availability, please call ahead to check if a glass case is available. Contact Julia Casillas, the Fair Manager, at (520)762-9106.
- **Judging:** Judging is closed to the public and all decisions are final.
- **Storage:** Items not collected within 2 weeks after the Fair will be donated or removed from the Fairgrounds due to lack of storage.
- **Cash Prizes:** Premiums and cash prizes will be paid to the artist during the Fair or upon releasing the artwork. Cash vouchers must be redeemed no later than Monday, April 27, 2026.
- **Copyright:** Copying work done by other artists is an infringement of copyright law, including photographs.
- **Quilt Size:** All quilts must not exceed 102 inches by 116 inches (Queen size) in length or width.

Frequently Asked Questions

- **Who are the judges?**
- Judges are selected based on their experience within the chosen category.
- **Why do we need to add the age of the Teen or Youth exhibitor?**
- Age is required to ensure accurate judging.
- **How does judging work?**
- Judging is closed to the public. After all entries are received and displayed, they will be judged using the Danish Judging System. All judging decisions are final. If you are interested in becoming a judge for the Pima County Fair, please contact Julia Casillas, the Fair Manager, at 520-762-9106.
- **When will the pieces need to be delivered to the Fair?**
- Exhibitors are responsible for delivering their artwork to the Fairgrounds on Friday, April 10, 2026, from 3pm to 6pm, or Saturday, April 11, 2026, from 10am to 4pm.
- **Is my entry considered Fine Art or Home Art?**
- **Home Art:** Functional art, applied arts, crafts, and related items aimed at homemakers, hobbyists, and group organizations.
- **Fine Art:** Visual art created primarily for aesthetic and intellectual purposes, judged for its beauty and meaningfulness. Successful entries demonstrate originality, artistic technique, and quality execution.
- **What are the requirements for my art exhibit?**
- Entries must not exceed 36 inches in any dimension or weigh more than 50 pounds. All artworks must be framed and wired, or if unframed, must have a wire screwed into the frame, ready to hang.
- **How many pieces am I allowed to enter each year?**
- Each artist may enter a maximum of five pieces per class, with a total limit of 30 items.
- **Where is my entry displayed?**
- Entries are displayed inside the Old Pueblo Conference and Event Center.
- **How will I know if I won an award or sold my piece?**
- Entries that have placed or received honorable mention will be displayed with the appropriate ribbon. Artists whose pieces have been sold will be contacted by the Fair Manager.
- **Will my entry be placed on social media or the website?**
- Yes, if your artwork is deemed worthy, it may be published on social media or the website.

Drop off Artwork

Exhibits can be dropped off and picked up at the Old Pueblo Conference and Event Center, Pima County Fairgrounds.
11300 S. Houghton Rd. Tucson, AZ 85747

Yes, someone else can drop off or pick up your artwork on your behalf. Just make sure they have all the necessary details and any required Entry Tag slip to ensure a smooth drop off and pick up process.

Drop off Schedule:

Friday, April 10, 2026: 3pm - 6pm

Saturday, April 11, 2026: 10am - 4pm

Pick up Artwork and Ribbons

Exciting News! You can now pick up your art and ribbons on the last day of the Fair.

Sunday, April 26, 2026: 1pm - 8pm (No drive-up access)

If you plan to pick up your artwork on Sunday, the last day of the fair, please note that an admission ticket and parking pass will still be required for each person to enter the fair and collect your artwork. You will not be able to retrieve your artwork without these purchases.

Alternatively, you can pick up your artwork on the designated drive-up day listed below without needing to purchase an admission ticket.

Pickup Schedule:

Monday, April 27, 2026: 10am - 3pm (Drive-up access available).

Exhibitor Passes are good for all eleven (11) days of the Fair. Only one parking comp pass per family or address.

FINE ARTS ENTRY FORM

ENTRANTS LAST NAME _____

FIRST NAME _____

PHONE _____

ADDRESS _____

CITY _____, AZ ZIP _____

EMAIL ADDRESS _____

ALL ENTRY FEES ARE NON-REFUNDABLE

Please circle one.

\$4.00 Professionals, Amateurs and Youth

\$2.50 Senior Amateurs and Senior Professionals (65 & up)

#	Division No.	Class No.	Title of Entry	Sale Price of Artwork (optional)	Special Needs Y/N	Entry Fee
1						
2						
3						
4						
5						
6						
7						
8						
9						
10						

1 Ticket \$25.00 _____

2 Ticket \$50.00 _____

Total _____

I understand and accept all risks of loss or damage to my exhibits from the point of delivery until their release after the Fair. I agree to abide by all stated rules and regulations. If my artwork is sold, I acknowledge that a 20% commission will be given to the Fair, with the remaining balance paid to me, the artist. Tag receipts provided at drop-off must be presented to redeem artwork on pickup dates.

Signature _____

Date _____