

Home Arts

We highly encourage you to enter your artwork online at www.pimacountyfair.com. Get involved!

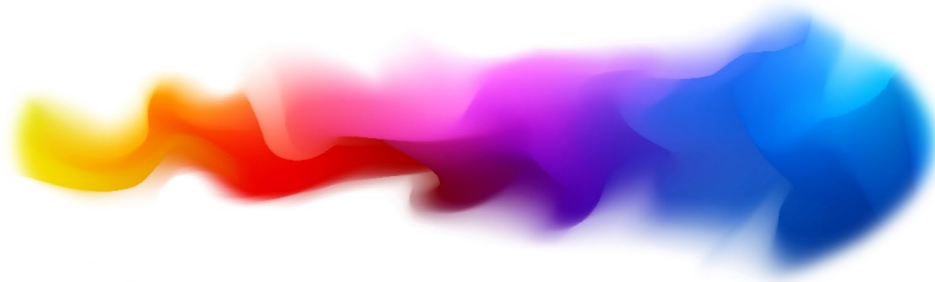
PRICE OF ENTRIES

\$2.00 per Adult

\$1.00 per Teen (ages 13-17)

\$1.00 per Youth (ages 5-12)

Theme: “Color Outside the Lines”



This year’s Home Arts Open Division theme, “Color Outside the Lines,” Think beyond the ordinary and let your creativity break the rules! This theme invites you to experiment with color, technique, and imagination. It’s about stepping outside your comfort zone and expressing joy, meaning or beauty in unconventional ways.

Ideas to Inspire You:

- Paint or draw using abstract patterns, unusual color combos, or mixed media.
- Sew or quilt something whimsical or asymmetrical with unexpected materials.
- Use bold brushstrokes, fabric scraps, or recycled items from your place.
- Submit a photograph that captures surprise, contrast or visual playfulness.

This is your chance to let go of perfection and create something wild, fun, or unexpected-where the mistake might become the masterpiece.

Splatter Paint Contest



DIVISION 480 – SPLATTER PAINT CONTEST – ADULT

DIVISION 481 – SPLATTER PAINT CONTEST- TEEN

DIVISION 482 – SPLATTER PAINT CONTEST – YOUTH

CLASS	DESCRIPTION
100	Participants are invited to create energetic, messy, and expressive works of art using the splatter painting technique. Whether you're inspired by Jackson Pollock or just love the freedom of flinging paint, this contest celebrates creativity with no brush rules.

Guidelines:

- Art must be created using splatter techniques. Brushes, droppers, fingers, and even toothbrushes are welcome—just no traditional brushstroke.
- Square or Round Canvas or heavy paper no larger than 24"x36".
- No 3D elements or glitter—just paint.
- It must be original work and created in 2025.
- Up to **1 entry per person**.

Judging Criteria: All entries—regardless of age division—will be judged together in a single contest.

Entries will be evaluated based on: Creativity & Energy, Use of Color, Composition and Overall Impression.

1st Place Winner: \$25

2nd Place Winner: \$15

3rd Place Winner: \$10

Hats off to Creativity Contest



DIVISION 470 – HATS OFF TO CREATIVITY CONTEST – ADULT
DIVISION 471 – HATS OFF TO CREATIVITY CONTEST- TEEN
DIVISION 472 – HATS OFF TO CREATIVITY CONTEST – YOUTH

CLASS
300

DESCRIPTION

Put your imagination on your head—literally! “Hats Off to Creativity” is a fun and whimsical contest celebrating the art of hat-making. Whether it’s hand-sewn, sculpted, knitted, upcycled, or completely outrageous, this contest is all about turning heads with your one-of-a-kind headwear.

Guidelines:

- All hats must be original (purchased from the store without design) or hand sewn, sculpted, knitted, crafted, or constructed.
- You may use any material: fabric, yarn, paper, cardboard, plastic, metal, recycled items, etc.
- Hats must fit on a display form.
- Limit one entry per person.

Judging Criteria: All entries—regardless of age division—will be judged together in a single contest.

Entries will be evaluated based on: Creativity & Originality, Craftsmanship, Visual Impact.

1st Place Winner: \$25

2nd Place Winner: \$15

3rd Place Winner: \$10

Table Decorating Contest



DIVISION 490 – TABLE DECORATING CONTEST – ADULT

DIVISION 491 – TABLE DECORATING CONTEST- TEEN

DIVISION 492 – TABLE DECORATING CONTEST – YOUTH

CLASS

200

DESCRIPTION

Showcase your talent by decorating a beautiful table at the Pima County Fair! Each participant will have one hexagon table to decorate, measuring 36 inches in diameter and approximately 36 inches high.

Guidelines:

- **Supplies:** Participants must bring all necessary items for table decoration, including table coverings.
- **Table Setup:** Each exhibitor is allowed to set up one hexagon table per entry.
- **Seating:** Tables should be set for either 2 or 4 people.
- **Menu Display:** A menu must be included with your table setting.
- **Decorative Food:** Non-perishable food items or food models can be used for decoration.
- **Centerpieces:** Centerpieces should not obstruct the overall view of the table or interfere with the diners' line of sight.

Judging Criteria: All entries—regardless of age division—will be judged together in a single contest.

Entries will be evaluated based on: Creativity & Originality, Visual Impact, Craftsmanship & Neatness and Theme Interpretation (Does the table clearly reflect the assigned or chosen theme by the artist).

1st Place Winner: \$25, 2nd Place Winner: \$15, 3rd Place Winner: \$10

Awards and Ribbons

1st Blue Ribbon

2nd Red Ribbon

3rd White Ribbon

Best of Show \$25.00

Best of Class \$15.00

People's Choice \$30.00

Cash Awards: Cash awards will be given as cash vouchers. Artists must collect these vouchers from the information desk and cash them at the Fair Office Cashier Window as soon as they are issued.

Cash vouchers must be redeemed no later than Monday, April 27, 2026

Award Criteria:

Ribbons will only be awarded if the entry meets a standard of quality as determined by the judge. An entry must be deemed worthy to receive an award.

Judging System:

We use the Danish Judging System, where each entry is evaluated individually based on merit rather than in direct competition with others. All judging decisions are final.

Types of Judging:

Merit-Based Judging: Each piece is judged on its own merits according to set standards.

Competitive Judging: Only entries selected for Best of Class, Best of Show, Contests and People's Choice will be compared against other entries.

Best of Class Guidelines:

15 or More Entries: Eligible for Best of Class award with a monetary prize.

3 to 14 Entries: May be awarded Best of Class title, without a monetary prize.

Fewer than 3 Entries: Not eligible for Best of Class recognition.

This approach ensures that high-quality work is acknowledged in all categories while reserving prize funds for larger, more competitive divisions.

Yes, you can sell your artwork

Sales of Artwork:

The Pima County Fair is excited to offer the opportunity for artwork to be sold during the event. Here are the guidelines:

Pricing: Prices must be fixed amounts with no range or flexibility. No negotiations between the buyer and the artist are allowed.

Purchase Process: Artwork is sold on a first-come, first-served basis. Buyers must complete a purchase form and pay the Fair Manager.

Commission: The Fair will take a 20% commission on sales. The remaining balance will be given to the artist on the last day of the Fair.

Please note: All artwork that is sold may be picked up on the day of purchase. As a result, the piece you are displaying may not remain on display for the full 11 days of the Fair.

Distribution: The Fair Manager is solely responsible for the distribution of artwork.

Cash Awards: Cash awards will be given as cash vouchers. Artists must collect these vouchers from the Home Arts information desk and cash them at the Fair Office as soon as they are issued. Cash vouchers must be redeemed no later than Monday, April 27, 2026.

HOME ARTS OPEN DIVISION

DIVISION 400 – SEWING AND NEEDLE CRAFT – ADULT

DIVISION 401 – SEWING AND NEEDLE CRAFT – TEEN

DIVISION 402 – SEWING AND NEEDLE CRAFT – YOUTH

CLASS	DESCRIPTION
100	Accessories
101	Applique
102	Apron
103	Business Wear
104	Cartoon Characters
105	Children's Clothing & Accessories
106	Costumes
107	Crocheted Article
108	Daily Wear & Casual Clothing
109	Doll Clothes
110	Dressy, Evening Wear or Wedding Dress
111	Fabric Painting
112	Hooked Article
113	Knitted Article
114	Needlepoint Article
115	Pillows
116	Smocked Article
117	Stuffed Animals
118	Superhero's
119	Toys
120	Tied Dye or Batik
121	Wool Fabric Article 60% made of wool
122	Other - Sewing & Needle Craft

DIVISION 403 – QUILTING – ADULT

DIVISION 404 – QUILTING – TEEN

DIVISION 405 – QUILTING – YOUTH

CLASS	DESCRIPTION
100	Appliqued (Hand or Machine)
101	Baby Quilt
102	Full-Size Quilt - Machine
103	Full-Size Quilt - Hand Sewn
104	Miniature Quilt
105	Modern Quilt
106	Art or Mixed Media
107	Quilt from a kit
108	Upcycled or Recycled Quilt
109	Other Quilted Items (e.g., Garments, Pillows, Accessories)

HOME ARTS OPEN DIVISION

DIVISION 406 – KNITTING – ADULT

DIVISION 407 – KNITTING – TEEN

DIVISION 408 – KNITTING – YOUTH

CLASS	DESCRIPTION
100	Accessor
101	Afghan
102	Baby Clothing
103	Beaded
104	Bedsread, Blanket
105	Clothing
106	Doily
107	Doll Clothes
108	Household Article
109	Toy or Animal
110	Other - Knitting

DIVISION 409 – CROCHETING – ADULT

DIVISION 410 – CROCHETING – TEEN

DIVISION 411 – CROCHETING – YOUTH

CLASS	DESCRIPTION	CLASS	DESCRIPTION
100	Accessory	110	Rug
101	Afghan	111	Tablecloth
102	Baby Clothing	112	Toy or Animal
103	Beaded	113	Other - Crocheting
104	Bedsread		
105	Clothing		
106	Doily		
107	Doll Clothing		
108	Household Article		
109	Pillow		

DIVISION 412 - COUNTED CROSS STITCH - ADULT

DIVISION 413 - COUNTED CROSS STITCH - TEEN

DIVISION 414 - COUNTED CROSS STITCH - YOUTH

CLASS	DESCRIPTION
100	Clothing
101	Household Article
102	Picture or Wall Hanging, ready to hang
103	Other - Counted Cross Stitch

HOME ARTS OPEN DIVISION

DIVISION 415 – EMBROIDERY – ADULT

DIVISION 416 – EMBROIDERY – TEEN

DIVISION 417 – EMBROIDERY – YOUTH

CLASS	DESCRIPTION
100	Clothing
101	Crewel
102	Household Article
103	Long Stitch
104	Picture or Wall Hanging, ready to hang
105	Other - Embroidery

DIVISION 418 – PLASTIC CANVAS NEEDLEPOINT – ADULT

DIVISION 419 – PLASTIC CANVAS NEEDLEPOINT – TEEN

DIVISION 420 – PLASTIC CANVAS NEEDLEPOINT – YOUTH

CLASS	DESCRIPTION
100	Accessory
101	Household Article
102	Picture or Wall Hanging, ready to hang
103	Toy
104	Other - Plastic Canvas Needlepoint

DIVISION 421 – NEEDLEPOINT – ADULT

DIVISION 422 – NEEDLEPOINT – TEEN

DIVISION 423 – NEEDLEPOINT – YOUTH

CLASS	DESCRIPTION
100	Accessory
101	Household Article
102	Long Point
103	Petit Point (8-20 per inch)
104	Picture or Wall Hanging, ready to hang
105	Toy
106	Other - Needlepoint

HOME ARTS OPEN DIVISION

DIVISION 424 – MISCELLANEOUS – ADULT

DIVISION 425 – MISCELLANEOUS – TEEN

DIVISION 426 – MISCELLANEOUS – YOUTH

CLASS	DESCRIPTION
100	3D Painting
101	Bead Art
102	Candles
103	Carved Article - Not from Wood
104	Chalk Art
105	Decorated Shoe
106	Decorative Egg
107	Dolls
108	Dough Art
109	Dream Catcher
110	Duct Tape Art or Projects
111	Fabric Painting
112	Glass Fusion
113	Handmade Soap
114	Holiday
115	Leather Crafted Item
116	Mask
117	Metal Work
118	Puppet
119	Spray Paint
120	Stained Glass
121	Tie Dye
122	Tole Painting
123	Toys
124	Weaving
125	Wind Chimes
126	Zipper Craft
127	Other - Miscellaneous

HOME ARTS OPEN DIVISION

DIVISION 427 – GOURDS – ADULT

DIVISION 428 – GOURDS – TEEN

DIVISION 429 – GOURDS – YOUTH

CLASS	DESCRIPTION
100	Carved
101	Birdhouses or Bird Feeders
102	Decorated with beads, flowers, jewelry, etc.
103	Holiday
104	Southwest Designs
105	Wood Burned
106	Other - Gourds

DIVISION 430 – JEWELRY – ADULT

DIVISION 431 – JEWELRY – TEEN

DIVISION 432 – JEWELRY – YOUTH

CLASS	DESCRIPTION
100	Beaded
101	Chain Making
102	Lapidary
103	Silversmithing
104	Strung
105	Tatted
106	Other - Jewelry

DIVISION 433 – TATTING – ADULT

DIVISION 434 – TATTING – TEEN

DIVISION 435 – TATTING – YOUTH

CLASS	DESCRIPTION
100	Accessory
101	Bookmarkers
102	Clothing
103	Doily
104	Other - Tatting

HOME ARTS OPEN DIVISION

DIVISION 436 – WOODWORKING – ADULT

DIVISION 437 – WOODWORKING – TEEN

DIVISION 438 – WOODWORKING – YOUTH

CLASS	DESCRIPTION
100	Birdhouse - Kit
101	Birdhouse - No Kit
102	Cane or Walking Stick
103	Chainsaw
104	Chest - Kit
105	Chest - No Kit
106	Clock - Kit
107	Clock - No Kit
108	Doll Furniture - Kit
109	Doll Furniture - No Kit
110	Doll House - Kit
111	Doll House - No Kit
112	Fret Work
113	Furniture - Kit
114	Furniture - No Kit
115	Hand Carved / Whittling
116	Intarsia
117	Machined
118	Wood Burning
119	Other - Woodworking

DIVISION 439 – FLORAL & GARDENING – ADULT

DIVISION 440 – FLORAL & GARDENING – TEEN

DIVISION 441 – FLORAL & GARDENING – YOUTH

CLASS	DESCRIPTION
100	Cactus Plant
101	Floral Arrangements using Real Flowers
102	Floral Arrangements using Silk Flowers
103	Fruit Plant
104	Mini Garden
105	Potted Plant
106	Single Flower
107	Vegetable Plant
108	Other - Floral & Gardening

HOME ARTS OPEN DIVISION

DIVISION 442 – DECORATED ROCK – ADULT

DIVISION 443 – DECORATED ROCK – TEEN

DIVISION 444 – DECORATED ROCK – YOUTH

Rock dimensions: The largest can only be 6" X 6" and the smallest is 2 ½" X 2 ½". Take a rock and decorate it using paint, glitter, rhinestones, sequins, pearls, ribbon, flowers, etc. You can use any media that you choose.

CLASS	DESCRIPTION
100	Animals / Insects
101	Favorite Sports Team
102	Holiday Decoration
103	Landscapes
104	Portrait / Faces
105	School Colors / Theme
106	Other - Decorated Rock

DIVISION 445 – MODEL BUILDING – ADULT

DIVISION 446 – MODEL BUILDING – TEEN

DIVISION 447 – MODEL BUILDING – YOUTH

CLASS	DESCRIPTION
100	Balsa Wood Model
101	Diorama
102	Lego Kit Design
103	Lego, Your Design
104	Snap or Glue Together Model
105	Other - Model Building

DIVISION 448 – CERAMICS – ADULT

DIVISION 449 – CERAMICS – TEEN

DIVISION 450 – CERAMICS – YOUTH

CLASS	DESCRIPTION
100	Ceramic Article, Molded by Entrant
101	Ceramic Article, Pre - Molded
102	Fired, Hand Molded Clay Article
103	Hand - Molded Clay Article
104	Plaster Craft
105	Other - Ceramics

HOME ARTS OPEN DIVISION

DIVISION 451 – PHOTOGRAPHY – ADULT

DIVISION 452 – PHOTOGRAPHY – TEEN

DIVISION 453 – PHOTOGRAPHY – YOUTH

CLASS	DESCRIPTION
100	Black & White - Animal
101	Black & White - Flowers / Plants
102	Black & White - Landscape
103	Black & White - People
104	Black & White - Pets
105	Black & White - Sports
106	Cell Phone and Photo Shopped Images
107	Color - Animal
108	Color - Flowers / Plants
109	Color - Landscape
110	Color - People
111	Color - Pets
112	Color - Sports
113	Mixed Media - Animal
114	Mixed Media - Flowers / Plants
115	Mixed Media - Landscape
116	Mixed Media - People
117	Mixed Media - Pets
118	Mixed Media - Sports
119	Raw Images
120	Sepia
121	Stain, Smudge and Erode Using Water
122	Stitched Vintage
123	Underwater
124	Other - Photography

DIVISION 454 – ARTWORK – ADULT

DIVISION 455 – ARTWORK – TEEN

DIVISION 456 – ARTWORK – YOUTH

CLASS	DESCRIPTION
100	Crayon Drawings
101	Ink, Pen & Colored Marker Drawings
102	Painting - Acrylic / Oil
103	Painting - Water Colors
104	Paper Mache
105	Pencil Drawings
106	Other - Artwork

HOME ARTS OPEN DIVISION

DIVISION 457 – PAPER CRAFTS – ADULT

DIVISION 458 – PAPER CRAFTS – TEEN

DIVISION 459 – PAPER CRAFTS – YOUTH

CLASS	DESCRIPTION
100	Card Making - Any Design / Any Occasion
101	Origami
102	Paper Mache
103	Scrapbooking - Any Design / Any Occasion
104	Other - Paper Crafts

DIVISION 460 – RECYCLED CRAFTS – ADULT

DIVISION 461 – RECYCLED CRAFTS – TEEN

DIVISION 462 – RECYCLED CRAFTS – YOUTH

CLASS	DESCRIPTION
100	Clothing
101	Furniture - Outside or Inside
102	Hair Accessory
103	Handbags
104	Jewelry
105	Tools
106	Other - Recycled Crafts

DIVISION 463 – TREE ORNAMENTS – ADULT

DIVISION 464 – TREE ORNAMENTS – TEEN

DIVISION 465 – TREE ORNAMENTS – YOUTH

CLASS	DESCRIPTION
100	Celebration Ornament
101	Creative Ornament
102	Holiday Ornament
103	Other - Tree Ornaments

DIVISION 466 – COLLECTABLES – ADULT

DIVISION 467 – COLLECTABLES – TEEN

DIVISION 468 – COLLECTABLES – YOUTH

CLASS	DESCRIPTION	CLASS	DESCRIPTION
100	Animals	105	Magnets
101	Arrowheads	106	Rocks
102	Bells	107	Sports
103	Cards	108	Stamps
104	Dolls / Figurines	109	Other - Collectables

General Rules

- **No Business Cards:** Business cards are not allowed on any entries.
- **Framing Requirements:** Artwork must be framed and ready to hang with heavy gauge picture wire. No glue or tape can be used.
- **Canvas Paintings:** Unframed canvas paintings must have a wire screwed into the frame.
- **Appropriateness:** Due to the family atmosphere of the Fair, artwork deemed inappropriate or containing nudity will not be accepted.
- **Liability:** The Pima County Fair and its agents assume no responsibility for loss, theft, or damage to any artwork during drop-off, display, pick-up, or storage. Every precaution will be taken to guard against such loss or damage.
- **Original Entries:** Entries must be from an individual artist. Previously submitted artwork is prohibited.
- **Size and Weight Limits:** Entries cannot exceed 36 inches in any dimension or weigh more than 50 pounds.
- **Classification:** Exhibitors are responsible for determining the correct class and division for their entries. Improperly classified entries may be disqualified with no entry fee refund.
- **Glass Cases:** Due to limited availability, please call ahead to check if a glass case is available. Contact Julia Casillas, the Fair Manager, at (520)762-9106.
- **Judging:** Judging is closed to the public and all decisions are final.
- **Storage:** Items not collected within 2 weeks after the Fair will be donated or removed from the Fairgrounds due to lack of storage.
- **Cash Prizes:** Premiums and cash prizes will be paid to the artist during the Fair or upon releasing the artwork. Cash vouchers must be redeemed no later than Monday, April 27, 2026.
- **Copyright:** Copying work done by other artists is an infringement of copyright law, including photographs.
- **Quilt Size:** All quilts must not exceed 102 inches by 116 inches (Queen size) in length or width.

Frequently Asked Questions

- **Who are the judges?**

Judges are selected based on their experience within the chosen category.

- **Why do we need to add the age of the Teen or Youth exhibitor?**

Age is required to ensure accurate judging.

- **How does judging work?**

Judging is closed to the public. After all entries are received and displayed, they will be judged using the Danish Judging System. All judging decisions are final. If you are interested in becoming a judge for the Pima County Fair, please contact Julia Casillas, the Fair Manager, at 520-762-9106.

- **When will the pieces need to be delivered to the Fair?**

Exhibitors are responsible for delivering their artwork to the Fairgrounds on Friday, April 10, 2026, from 3pm to 6pm, or Saturday, April 11, 2026, from 10am to 4pm.

- **Is my entry considered Fine Art or Home Art?**

- **Home Art:** Functional art, applied arts, crafts, and related items aimed at homemakers, hobbyists, and group organizations.

- **Fine Art:** Visual art created primarily for aesthetic and intellectual purposes, judged for its beauty and meaningfulness. Successful entries demonstrate originality, artistic technique, and quality execution.

- **What are the requirements for my art exhibit?**

Entries must not exceed 36 inches in any dimension or weigh more than 50 pounds. All artworks must be framed and wired, or if unframed, must have a wire screwed into the frame, ready to hang.

- **How many pieces am I allowed to enter each year?**

Each artist may enter a maximum of five pieces per class, with a total limit of 30 items.

- **Where is my entry displayed?**

Entries are displayed inside the Old Pueblo Conference and Event Center.

- **How will I know if I won an award or sold my piece?**

Entries that have placed or received honorable mention will be displayed with the appropriate ribbon. Artists whose pieces have been sold will be contacted by the Fair Manager.

- **Will my entry be placed on social media or the website?**

Yes, if your artwork is deemed worthy, it may be published on social media or the website.

Drop off Artwork

Exhibits can be dropped off and picked up at the Old Pueblo Conference and Event Center, Pima County Fairgrounds.

11300 S. Houghton Rd. Tucson, AZ 85747

Yes, someone else can drop off or pick up your artwork on your behalf. Just make sure they have all the necessary details and any required Entry Tag to ensure a smooth drop off and pick up process.

Drop off Schedule:

Friday, April 10, 2026: 3pm - 6pm

Saturday, April 11, 2026: 10am - 4pm

Pick up Artwork and Ribbons

Exciting News! You can now pick up your art and ribbons on the last day of the Fair.

Sunday, April 26, 2026: 1pm - 8pm (No drive-up access)

If you plan to pick up your artwork on Sunday, the last day of the fair, please note that an admission ticket and parking pass will still be required for each person to enter the fair and collect your artwork. You will not be able to retrieve your artwork without these purchases.

Alternatively, you can pick up your artwork on the designated drive-up day listed below without needing to purchase an admission ticket.

Pickup Schedule:

Monday, April 27, 2026: 10am - 3pm (Drive-up access available).

Exhibitor Passes are good for all eleven (11) days of the Fair. Only one parking comp pass per family or address.

HOME ARTS ENTRY FORM

ENTRANTS LAST NAME_____

FIRST NAME_____

PHONE_____

ADDRESS_____

CITY_____, AZ ZIP_____

EMAIL ADDRESS_____

ALL ENTRY FEES ARE NON-REFUNDABLE

Please circle one.

\$2.00 Adult (18+)

\$1.00 Teen (13-17)

\$1.00 Youth (5-12)

#	Division No.	Class No.	Title of Entry	Sale Price of Artwork (optional)	Special Needs Y/N	Entry Fee
1						
2						
3						
4						
5						
6						
7						
8						
9						
10						

1 Ticket \$25.00_____

2 Ticket \$50.00_____

Total _____

I understand and accept all risks of loss or damage to my exhibits from the point of delivery until their release after the Fair. I agree to abide by all stated rules and regulations. If my artwork is sold, I acknowledge that a 20% commission will be given to the Fair, with the remaining balance paid to me, the artist. Tag receipts provided at drop-off must be presented to redeem artwork on pickup dates.

Signature_____ **Date**_____